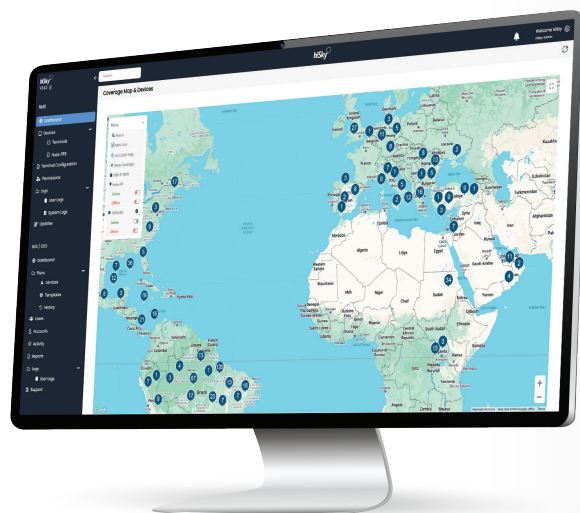


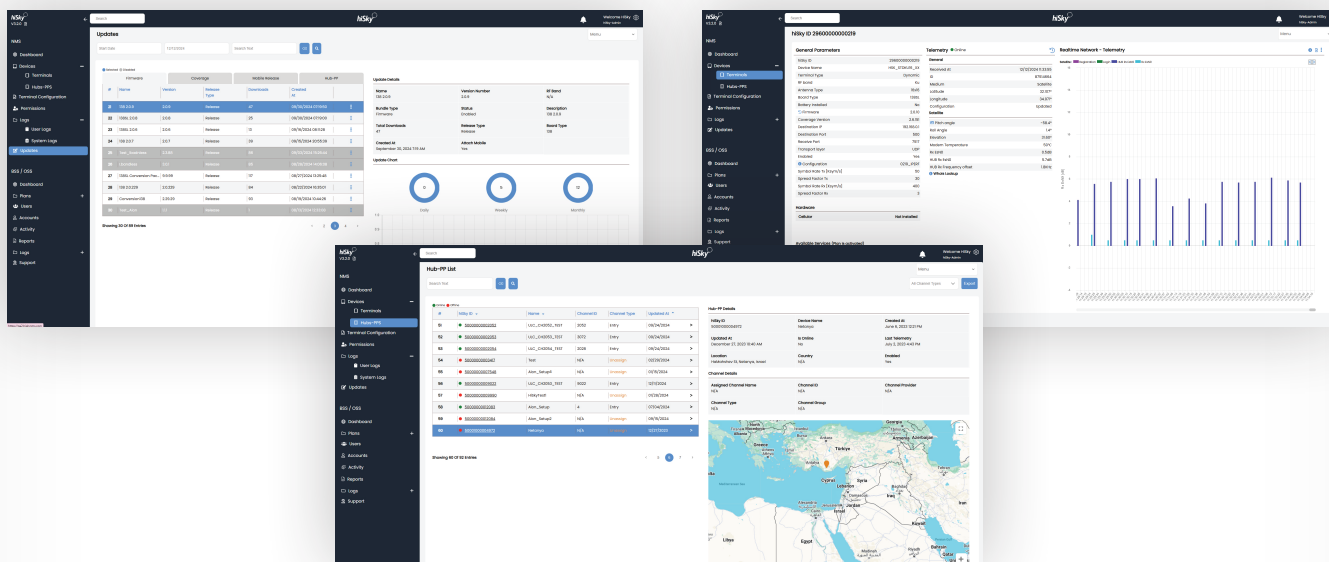
hiSky360

Network Management System

Simplifying Satellite Network Management



The **hiSky360** satellite network management system (NMS) is designed to empower hiSky partners and resellers with a comprehensive suite of tools for monitoring, administration, and analysis of the hiSky network. Its user-friendly interface and robust functionality ensure the efficient operation of hiSky satellite networks.

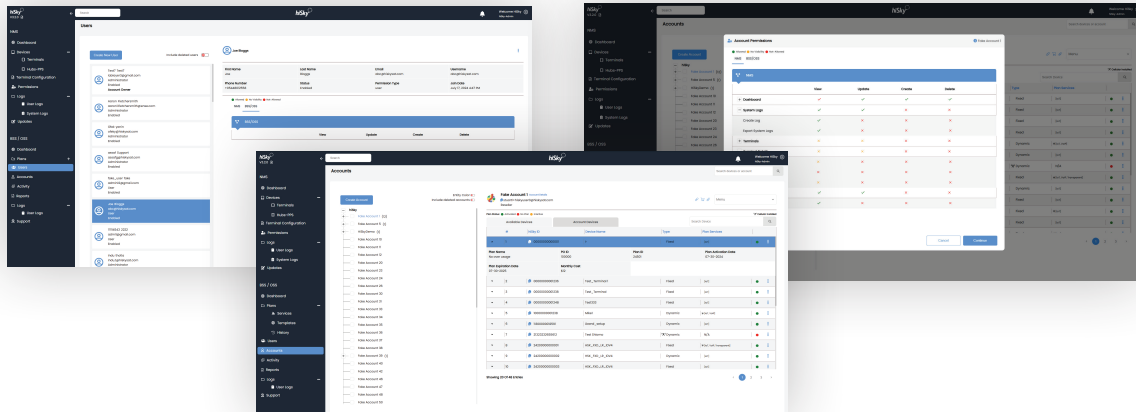


The cloud-based NMS platform enables setting up and maintaining the following components as well as extensive reporting:

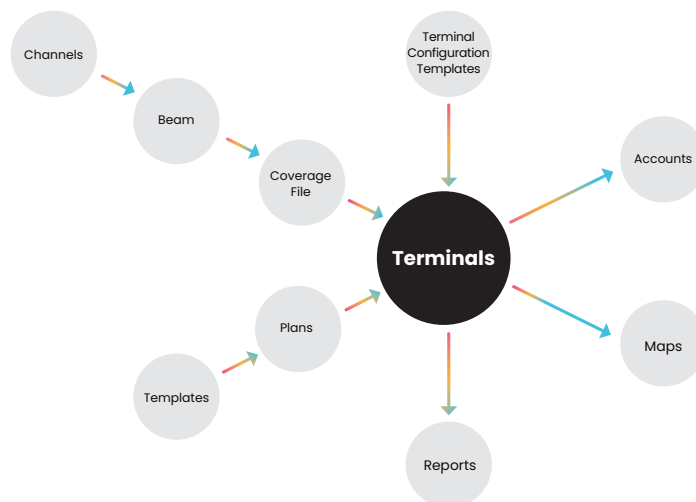
- User Management
- Terminal and HUB devices
- Terminal configurations
- Customer accounts
- Customer service plans
- Channel configurations
- Activity logs- status, alerts, failure data, unit location, HUB data, link budget and more.

The NMS also:

- > Enables management of terminals and HUBs assigned to accounts.
- > Manages network upgrades, and continuously displays a dynamic map of the status and location of all the hiSky network components.



Overview



Satellite-Cellular Hybrid Network Management

Enables unified management of all data from hybrid satellite-cellular networks, allowing hiSky partners and resellers to optimize data packages for their users by accurately billing according to the specific infrastructure being used for each byte.

