

hiSky's Hybrid Network

Maximizing Efficiency with Layered Connectivity

Staying connected is more crucial than ever. Whether you are in a bustling urban centre or a remote rural area, uninterrupted connectivity is a necessity. Recognizing the diverse needs of Industrial IoT, hiSky presents Hybrid-hiSky's Dual Mode Satellite-LTE Connectivity. This add-on to the hiSky network enables users to design a network based on LTE with an additional satellite layer, ensuring 24/7 uninterrupted connectivity. hiSky's Hybrid network transparent solution will dynamically swap between LTE and satellite communication as required, without any user input.

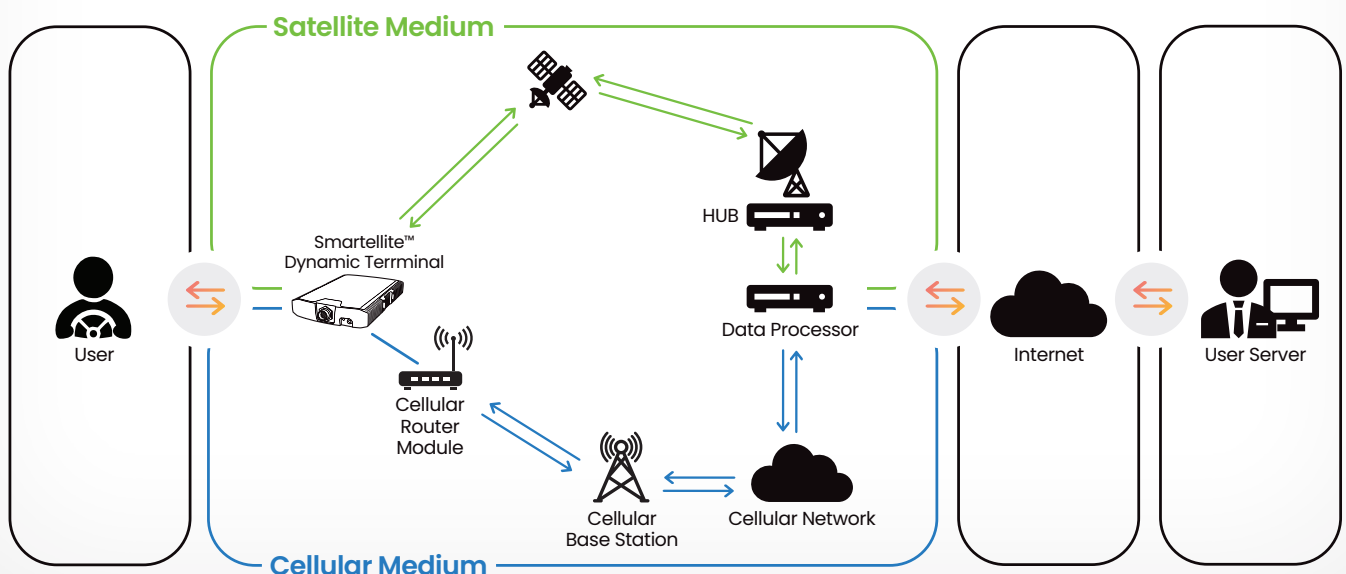
LTE is used when it is available, to take advantage of higher data rates, lower energy consumption and lower prices, and reliable satellite coverage will be available where needed.

Example use cases:

- On-the-move - entering and exiting terrestrial connectivity, in-land and maritime.
- On-the-pause - immediate satellite communication when terrestrial networks fail, essential with respect to, for example, critical infrastructure.

Description

An external LTE router is connected to a hiSky's Smartellite terminal via LAN cable. The network is configured through the hiSky360 NMS, which configures the default medium (satellite or cellular) and the secondary medium.



Unique Features

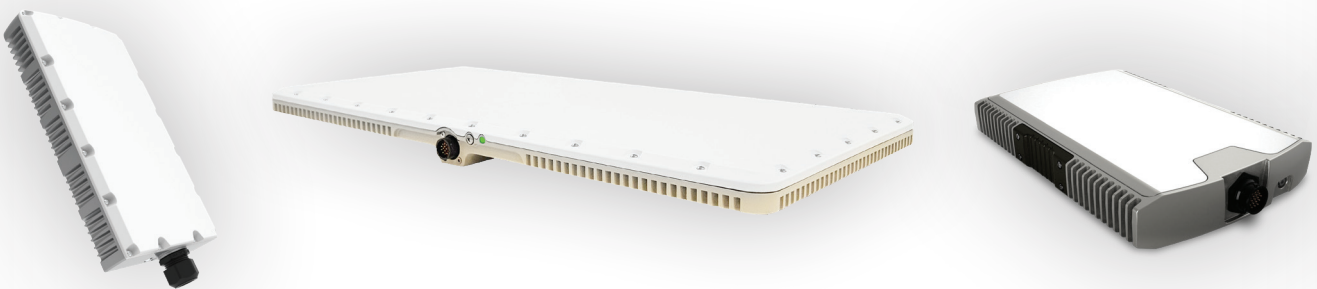
- > Seamless integrated cellular-satellite system (one interface for two infrastructures).
- > Unified data management - means of communication (cellular or satellite) is transparent.
- > Constantly checking end-to-end cellular infrastructure availability (does not solely rely only on signal strength).
- > The system is agnostic to choice of SIM.
- > Cellular as default and satellite as a backup, enabling maximum network efficiency .
- > Automatic switching between satellite and cellular connectivity.

Network coverage

Do not let geographical barriers hinder your connectivity. hiSky's global network integrates with varies GEO satellite operators, providing 24/7 reliable connectivity.

Choose your Smartellite™

Maximize your network's efficiency with an end-user terminal most suitable for your connectivity needs. From low-to-high data rates, the Smartellite™ family has the perfect fit for every need.



For more information

info@hiskysat.com | hiskysat.com/product

hiskysat.com

