



Next-generation Satellite IoT Connectivity for Railways

IoT-based rail management keeps trains operating at utmost safety with real-time processing of critical data from locomotives, rails, and crew.

hiSky offer's an IoT network designed to enable visibility, control, and better management of railway systems over satellite.

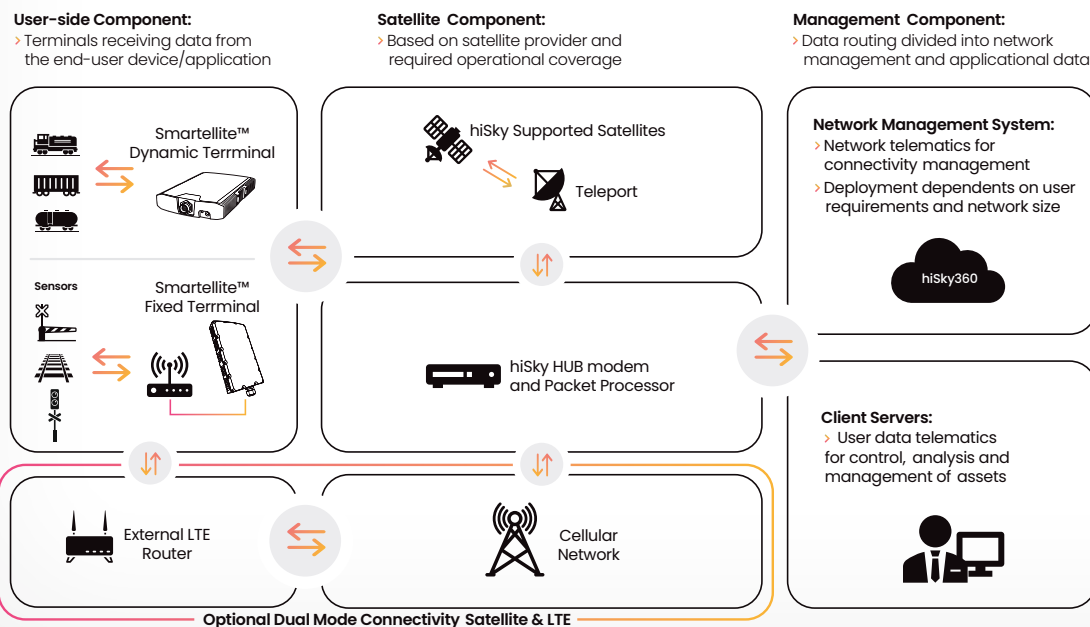
hiSky's unique technology enables transmission of all needed data on Ka/Ku-band frequencies over GEO satellites.

Features

- > Routing, location and tracking.
- > Incident Management.
- > Locomotive/ engine telematic monitoring for preventative maintenance.
- > Track Condition Sensing.
- > Voice and text communication.

Agile IoT Network

hiSky's open architecture enables easy integration with any device or application provider that suits your business needs, and integrates with any existing network to complement your coverage in all rural areas around the world.



Smartellite™ Family

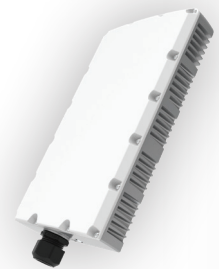
Smartellite™ Dynamic Ku/Ka band

hiSky's Smartellite™ Dynamic terminals include a state-of-the-art, electronically steerable phased array antenna which locates the satellite automatically in a matter of milliseconds, and a built-in modem designed for low-to-medium data rates and fast acquisition of satellite signals. Uniquely, the terminals are also designed to meet the requirements of LEO satellites, providing a future-proofed solution that will correlate with the market's connectivity demands.



Smartellite™ Fixed Ku/Ka band

hiSky's Smartellite™ Fixed terminal is a low-cost, compact satellite device based on a state-of-the-art design. The terminal comprises patch antennas and a built-in modem, designed for low-to-medium data rates and providing a mountable all-in-one solution, which independently & seamlessly directs communication over GEO satellites.



hiSky360 NMS

All Smartellite™ terminals are fully monitored by our cloud-based / on-premises management platform, hosting an operations portal allowing authorized subscribers or re-sellers to monitor and administer the hiSky platform and its various components. Developed inhouse to meet the highest hiSky standards, our NMS provides all the functionality our partners need to manage their global hiSky networks including configuration, monitoring, reporting, analysis, billing, etc.

