

## Next-generation Satellite IoT Connectivity for Environmental & Disaster Monitoring

IoT-based environmental monitoring is the consistent collection of measurements and data from our physical environment, using sensors and connected devices. Sensors embedded in irrigation systems, pipelines, tanks, weather stations, oceanic applications, and industrial equipment – anywhere on the planet – can detect temperature, moisture, water levels, leaks, and other physical properties.

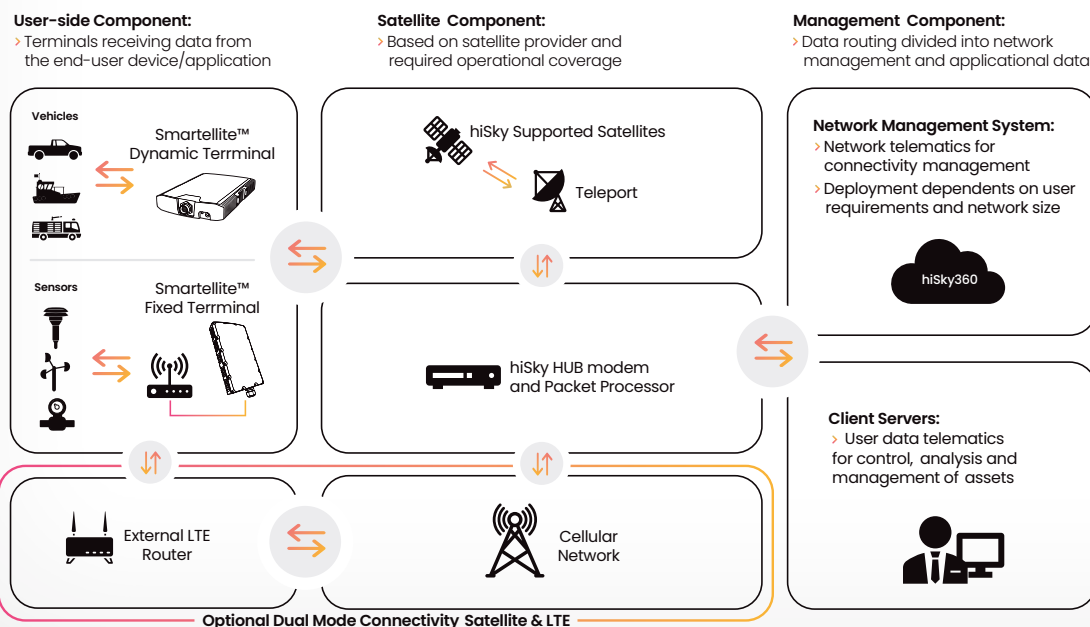
hiSky offer's an IoT network designed to enable visibility, control, and better management your infrastructure over satellite. hiSky's unique technology enables transmission of all needed data on Ka/Ku-band frequencies over GEO satellites.

### Features

- > API IP integration with any sensory device, aggregator or gateway:
  - Flood monitoring & warning systems
  - Fire monitoring & warning systems
  - Earthquake monitoring & warning systems
  - Tsunami monitoring & warning systems
- > Small form factor terminal directs communication through GEO satellites and therefore minor movements caused by wind does not affect connectivity and minimizes on-going maintenance.

### Agile IoT Network

hiSky's open architecture enables easy integration with any device or application provider that suits your business needs, and integrates with any existing network to complement your coverage in all rural areas around the world.



## Smartellite™ Family

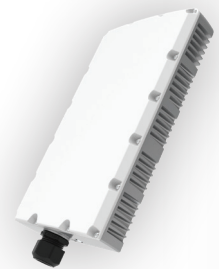
### Smartellite™ Dynamic Ku/Ka band

hiSky's Smartellite™ Dynamic terminals include a state-of-the-art, electronically steerable phased array antenna which locates the satellite automatically in a matter of milliseconds, and a built-in modem designed for low-to-medium data rates and fast acquisition of satellite signals. Uniquely, the terminals are also designed to meet the requirements of LEO satellites, providing a future-proofed solution that will correlate with the market's connectivity demands.



### Smartellite™ Fixed Ku/Ka band

hiSky's Smartellite™ Fixed terminal is a low-cost, compact satellite device based on a state-of-the-art design. The terminal comprises patch antennas and a built-in modem, designed for low-to-medium data rates and providing a mountable all-in-one solution, which independently & seamlessly directs communication over GEO satellites.



## hiSky360 NMS

All Smartellite™ terminals are fully monitored by our cloud-based / on-premises management platform, hosting an operations portal allowing authorized subscribers or re-sellers to monitor and administer the hiSky platform and its various components. Developed inhouse to meet the highest hiSky standards, our NMS provides all the functionality our partners need to manage their global hiSky networks including configuration, monitoring, reporting, analysis, billing, etc.

