



Next-generation Satellite IoT Connectivity for Emergency & Rescue Services

Satellite services are uniquely reliable and an invaluable tool for emergency responders during disaster relief.

It also aids humanitarian organizations and repair crews during disaster management and recovery.

Meeting the industry's need for reliable, low-cost connectivity, for mass number of end-users in a given region, hiSky's unified network offering both IoT/M2M and voice communication has become an accessible, easy-to-use solution for emergency services everywhere.

hiSky's unique technology enables transmission of all needed data on Ka/Ku-band frequencies over GEO satellites.

Features

- › On-the-move communication.
- › Voice and chat from any smart device.
- › Fleet management services including routing, tracking, SOS alerts.
- › Online vehicle telemetry for real-time files and report logs.
- › Allowing simultaneous mass network connectivity over Ka/Ku band.

Agile IoT Network

hiSky's open architecture enables easy integration with any device or application provider that suits your business needs, and integrates with any existing network to complement your coverage in all rural areas around the world.

User-side Component:

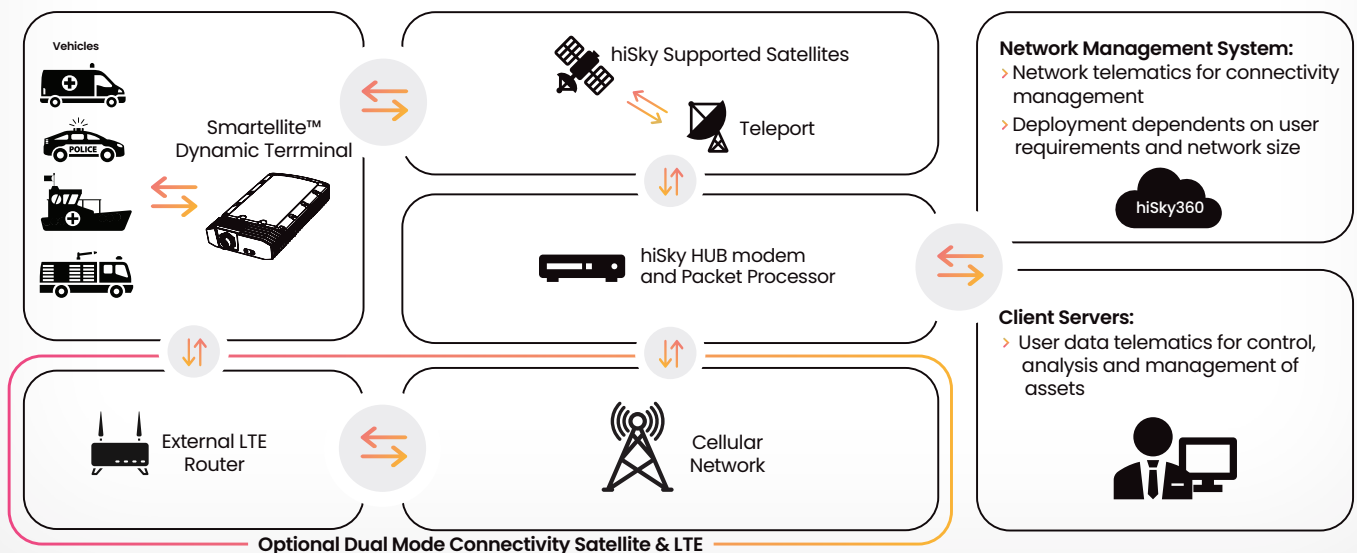
- › Terminals receiving data from the end-user device/application

Satellite Component:

- › Based on satellite provider and required operational coverage

Management Component:

- › Data routing divided into network management and applicational data



Smartellite™ Family

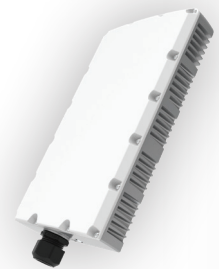
Smartellite™ Dynamic Ku/Ka band

hiSky's Smartellite™ Dynamic terminals include a state-of-the-art, electronically steerable phased array antenna which locates the satellite automatically in a matter of milliseconds, and a built-in modem designed for low-to-medium data rates and fast acquisition of satellite signals. Uniquely, the terminals are also designed to meet the requirements of LEO satellites, providing a future-proofed solution that will correlate with the market's connectivity demands.



Smartellite™ Fixed Ku/Ka band

hiSky's Smartellite™ Fixed terminal is a low-cost, compact satellite device based on a state-of-the-art design. The terminal comprises patch antennas and a built-in modem, designed for low-to-medium data rates and providing a mountable all-in-one solution, which independently & seamlessly directs communication over GEO satellites.



hiSky360 NMS

All Smartellite™ terminals are fully monitored by our cloud-based / on-premises management platform, hosting an operations portal allowing authorized subscribers or re-sellers to monitor and administer the hiSky platform and its various components. Developed inhouse to meet the highest hiSky standards, our NMS provides all the functionality our partners need to manage their global hiSky networks including configuration, monitoring, reporting, analysis, billing, etc.

