

Satellite Connectivity for Critical Infrastructure



hiSky is an Israeli communications company that provides a private satellite-based communications network for Industries monitoring multiple assets and sensory devices.

hiSky's networks act as a primary source of connectivity for remote assets lacking terrestrial communication abilities, and a secondary source of connectivity to critical assets in need of a non-cellular backup solution.

Our solution is hybrid with automatic and independent switching abilities between cellular and satellite networks. Our networks are reliable and designed to service robust networks with thousands of end-users simultaneously.

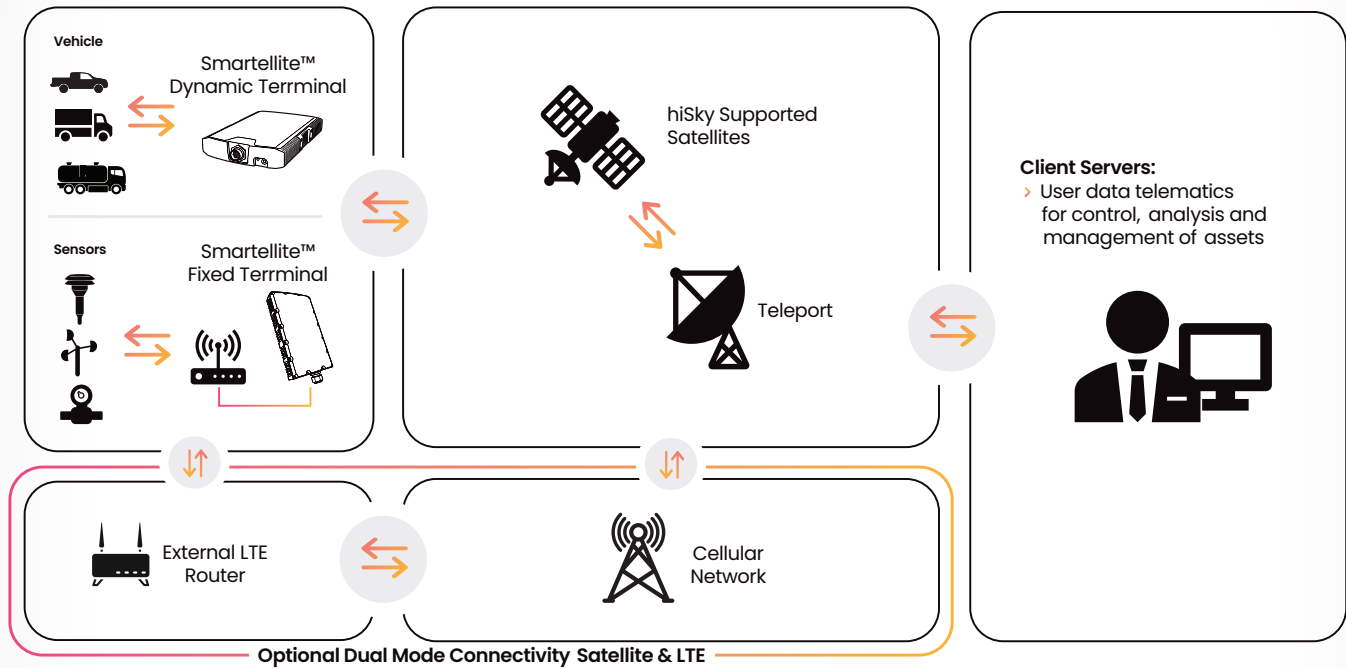
Network enables

- › Reduced zero asset downtime.
- › Remote monitoring, management and control of critical assets 24/7/365.
- › Small form factor terminal directs communication through GEO satellites and therefore minor movement of terminals caused by wind does not affect connectivity.
- › Additional service of satellite-voice calls available as and add-on to ongoing data transmissions.
- › Unified network for all assets, both fixed sensors and on-the-move company fleet.

Key network features:

1. SLA-based contract with pre-defined accessibility to the network eliminating network conjunction or failure during critical times.
2. Network is based on KA/KU-band frequencies enabling thousands of end-users to work simultaneously and uninterrupted.
3. Network's core HUB equipment is based in international teleports, unaffected by local / regional crisis.

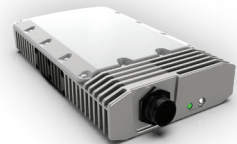
Network Architecture



Smartellite™ Family

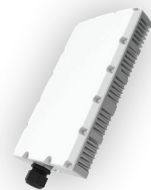
Smartellite™ Dynamic Ku/Ka-band

hiSky's Smartellite™ Dynamic terminals include a state-of-the-art, electronically steerable phased array antenna which locates the satellite automatically in a matter of milliseconds, and a built-in modem designed for low-to-medium data rates and fast acquisition of satellite signals. Uniquely, the terminals are also designed to meet the requirements of LEO satellites, providing a future-proofed solution that will correlate with the market's connectivity demands.



Smartellite™ Fixed Ku/Ka-band

hiSky's Smartellite™ Fixed terminal is a low-cost, compact satellite device based on a state-of-the-art design. The terminal comprises patch antennas and a built-in modem, providing a mountable all-in-one solution, which independently & seamlessly directs communication over GEO satellites.



hiSky360

All Smartellite™ terminals are fully monitored by our cloud-based / on-premises management platform.

hiskysat.com

