



Next-generation Satellite IoT Connectivity for Oil & Gas

Adoption of IoT and IIoT (Industrial IoT) in the energy and fossil oil & gas industries increases monitoring and control abilities of remote energy assets and infrastructure, such as offshore oil & gas platforms, pipeline monitoring and oil rig wells in rural locations.

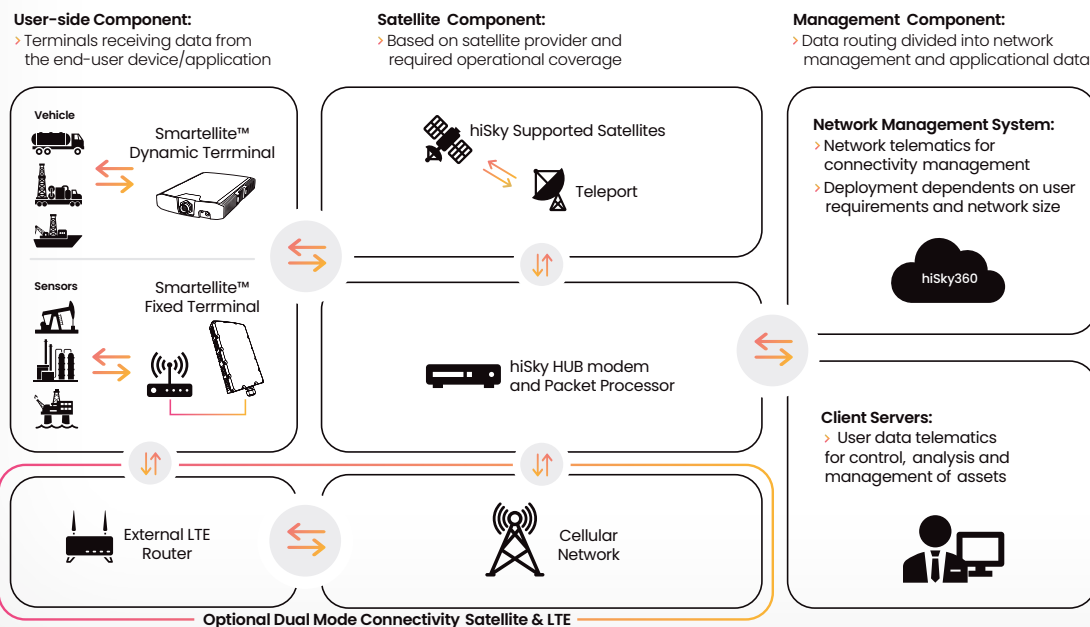
hiSky offer's an IoT network designed to enable visibility, control, and better management of your infrastructure over satellite. hiSky's unique technology enables transmission of all needed data on Ka/Ku-band frequencies over GEO satellites.

Features

- > Real-time process monitoring for extraction and drilling.
- > Real-time acceleration and enhancement of seismic data acquisition analysis.
- > Real-time gathering of database information.
- > Centralized monitoring efforts for multiple remote unmanned sites.
- > Voice calls and text messages from any smartphone.

Agile IoT Network

hiSky's open architecture enables easy integration with any device or application provider that suits your business needs, and integrates with any existing network to complement your coverage in all rural areas around the world.



Smartellite™ Family

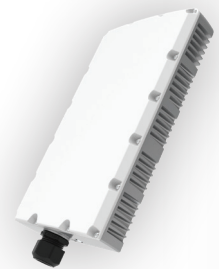
Smartellite™ Dynamic Ku/Ka band

hiSky's Smartellite™ Dynamic terminals include a state-of-the-art, electronically steerable phased array antenna which locates the satellite automatically in a matter of milliseconds, and a built-in modem designed for low-to-medium data rates and fast acquisition of satellite signals. Uniquely, the terminals are also designed to meet the requirements of LEO satellites, providing a future-proofed solution that will correlate with the market's connectivity demands.



Smartellite™ Fixed Ku/Ka band

hiSky's Smartellite™ Fixed terminal is a low-cost, compact satellite device based on a state-of-the-art design. The terminal comprises patch antennas and a built-in modem, designed for low-to-medium data rates and providing a mountable all-in-one solution, which independently & seamlessly directs communication over GEO satellites.



hiSky360 NMS

All Smartellite™ terminals are fully monitored by our cloud-based / on-premises management platform, hosting an operations portal allowing authorized subscribers or re-sellers to monitor and administer the hiSky platform and its various components. Developed inhouse to meet the highest hiSky standards, our NMS provides all the functionality our partners need to manage their global hiSky networks including configuration, monitoring, reporting, analysis, billing, etc.

