



Next-generation Satellite IoT Connectivity for Mining Industry

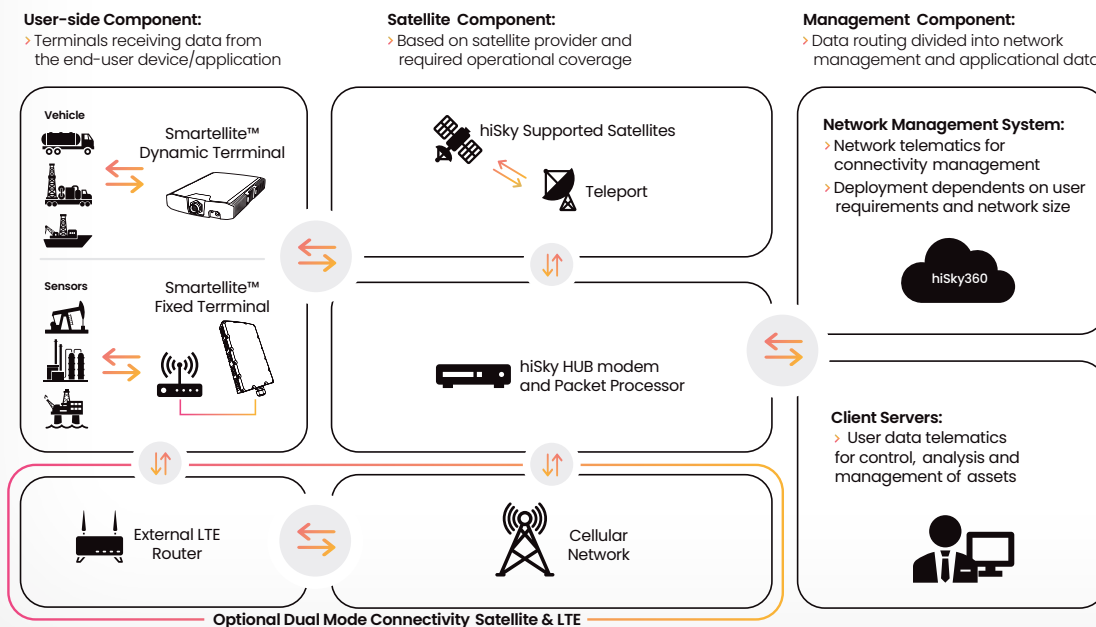
Often, mining sites are situated in extremely remote areas, where access to critical connectivity is unavailable, jeopardizing both safety and mission success. This is precisely where hiSky comes into play – we have devised proprietary technology that enhances communication between employees and machines (M2M), tailored specifically for the IoT and the information revolution, **empowering you to transform your site into an intelligent, efficiently managed location.**

Features

- > Asset tracking and monitoring
- > Environmental monitoring
- > Improved Safety & Communication
- > Machinery telematics
- > Geotechnical monitoring
- > Supply chain management
- > Remote equipment diagnostics & maintenance

Agile IoT Network

hiSky's open architecture enables easy integration with any device or application provider that suits your business needs, and integrates with any existing network to complement your coverage in all rural areas around the world.



Smartellite™ Family

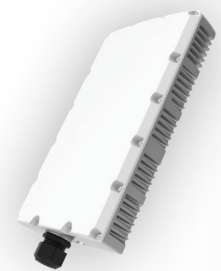
Smartellite™ Dynamic Ku/Ka band

hiSky's Smartellite™ Dynamic terminals include a state-of-the-art, electronically steerable phased array antenna which locates the satellite automatically in a matter of milliseconds, and a built-in modem designed for low-to-medium data rates and fast acquisition of satellite signals. Uniquely, the terminals are also designed to meet the requirements of LEO satellites, providing a future-proofed solution that will correlate with the market's connectivity demands.



Smartellite™ Fixed Ku/Ka band

hiSky's Smartellite™ Fixed terminal is a low-cost, compact satellite device based on a state-of-the-art design. The terminal comprises patch antennas and a built-in modem, designed for low-to-medium data rates and providing a mountable all-in-one solution, which independently & seamlessly directs communication over GEO satellites.



hiSky360 NMS

All Smartellite™ terminals are fully monitored by our cloud-based / on-premises management platform, hosting an operations portal allowing authorized subscribers or re-sellers to monitor and administer the hiSky platform and its various components. Developed inhouse to meet the highest hiSky standards, our NMS provides all the functionality our partners need to manage their global hiSky networks including configuration, monitoring, reporting, analysis, billing, etc.

