



## Next-generation Satellite IoT Connectivity for **Land-Mobility & Fleet Management**

hiSky's Smartellite™ terminals are designed to easily connect to any vehicle or smart mobile device, enabling coast-2-coast communications of voice, text & vehicle data telematics. Perfectly suitable for rural travel out of terrestrial communication services reach.

hiSky offer's an IoT network designed to enable visibility, control, and better management of your fleet over satellite. hiSky's unique technology enables transmission of all needed data on Ka/Ku-band frequencies over GEO satellites.

### Features

- › Integrates with any sensory device or fleet management application provider.
- › Lightweight & portable.
- › Easily mounted (permanently or temporary).
- › Voice and text from any personal smart device.
- › Vehicle telematics for maintenance and tracking.
- › A hybrid Satellite-LTE solution.

### Agile IoT Network

hiSky's open architecture enables easy integration with any device or application provider that suits your business needs, and integrates with any existing network to complement your coverage in all rural areas around the world.

#### User-side Component:

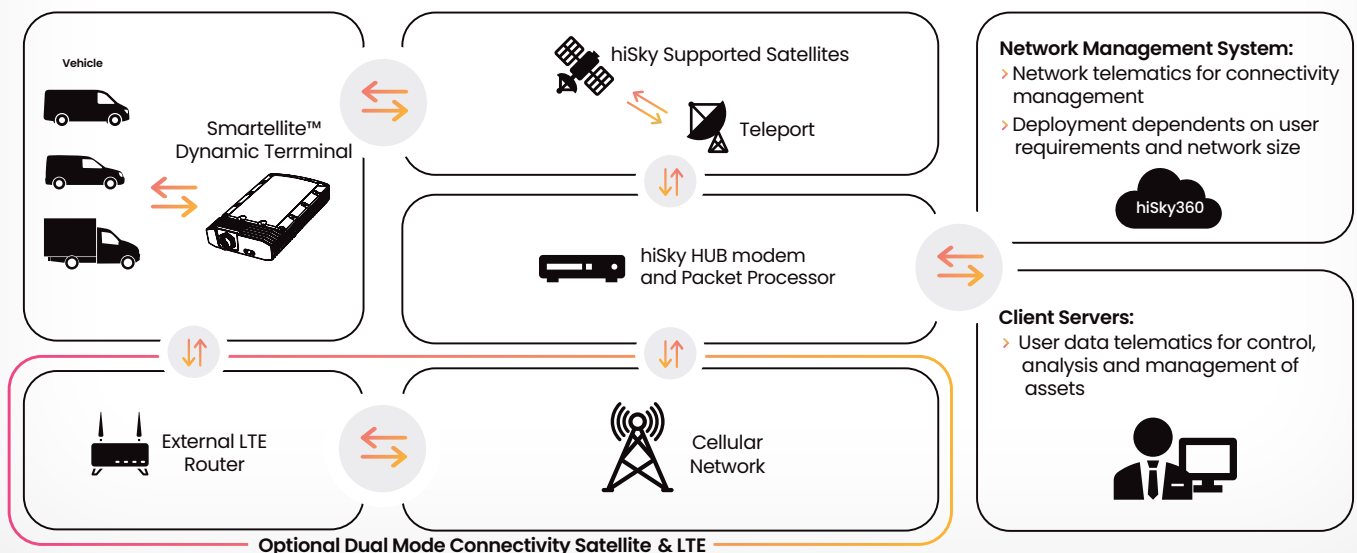
- › Terminals receiving data from the end-user device/application

#### Satellite Component:

- › Based on satellite provider and required operational coverage

#### Management Component:

- › Data routing divided into network management and applicational data



## Smartellite™ Family

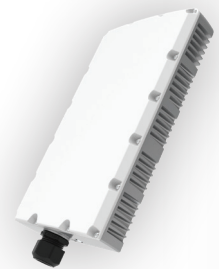
### Smartellite™ Dynamic Ku/Ka band

hiSky's Smartellite™ Dynamic terminals include a state-of-the-art, electronically steerable phased array antenna which locates the satellite automatically in a matter of milliseconds, and a built-in modem designed for low-to-medium data rates and fast acquisition of satellite signals. Uniquely, the terminals are also designed to meet the requirements of LEO satellites, providing a future-proofed solution that will correlate with the market's connectivity demands.



### Smartellite™ Fixed Ku/Ka band

hiSky's Smartellite™ Fixed terminal is a low-cost, compact satellite device based on a state-of-the-art design. The terminal comprises patch antennas and a built-in modem, designed for low-to-medium data rates and providing a mountable all-in-one solution, which independently & seamlessly directs communication over GEO satellites.



## hiSky360 NMS

All Smartellite™ terminals are fully monitored by our cloud-based / on-premises management platform, hosting an operations portal allowing authorized subscribers or re-sellers to monitor and administer the hiSky platform and its various components. Developed inhouse to meet the highest hiSky standards, our NMS provides all the functionality our partners need to manage their global hiSky networks including configuration, monitoring, reporting, analysis, billing, etc.

